

Raritan provides secure IT infrastructure management solutions that increase data center efficiency and productivity by delivering integrated in-band and out-of-band server access, control and power management. Raritan's KVM, serial console and intelligent PDU products are in use at over 50,000 locations worldwide.

Raritan's OEM division provides embedded hardware and firmware for server and client management, including KVM over IP, IPMI, intelligent power management and other industry standards-based management applications.

North American Headquarters

USA

Raritan, Inc.
400 Cottontail Lane
Somerset, NJ 08873
Phone: (800) 724-8090 (North America)
Phone: (732) 764-8886
Fax: (732) 764-8887
E-mail: sales@raritan.com
Web: Raritan.com

Japanese Headquarters

Japan

Tokyo
4th Floor, Shinkawa NS Building
1-26-2, Shinkawa, Chuo-ku,
Tokyo 104-0033
Phone: (81) 3-3523-5991
Fax: (81) 3-3523-5992
E-mail: sales.japan@raritan.com
Web: Raritanjapan.jp (English)
Web: Raritan.co.jp

Asia/Pacific Headquarters

Taiwan

5F, 121, Lane 235, Pao-Chiao Road,
Hsin Tien
Taipei, Taiwan
Phone: (886) 2 8919-1333
Fax: (886) 2 8919-1338
E-mail: sales.ap@raritan.com
Web: Raritan-ap.com (English)
Web: Raritan.com.tw

European Headquarters

Eglantierbaan 16
2908 LV Capelle aan den IJssel
The Netherlands
Phone: +31 (0)10 284 4040
Fax: +31 (0)10 284 4049
E-mail: sales.europe@raritan.com
Web: Raritan.eu (English)
Web: Raritan.fr (French)
Web: Raritan.de (German)

United Kingdom

9th Floor, 12-20 Camomile Street
London EC3A 7EX
United Kingdom
Phone: +44 (0)207 090 1390
Fax: +44 (0)207 090 1391
E-mail: sales.uk@raritan.com
Web: Raritan.co.uk

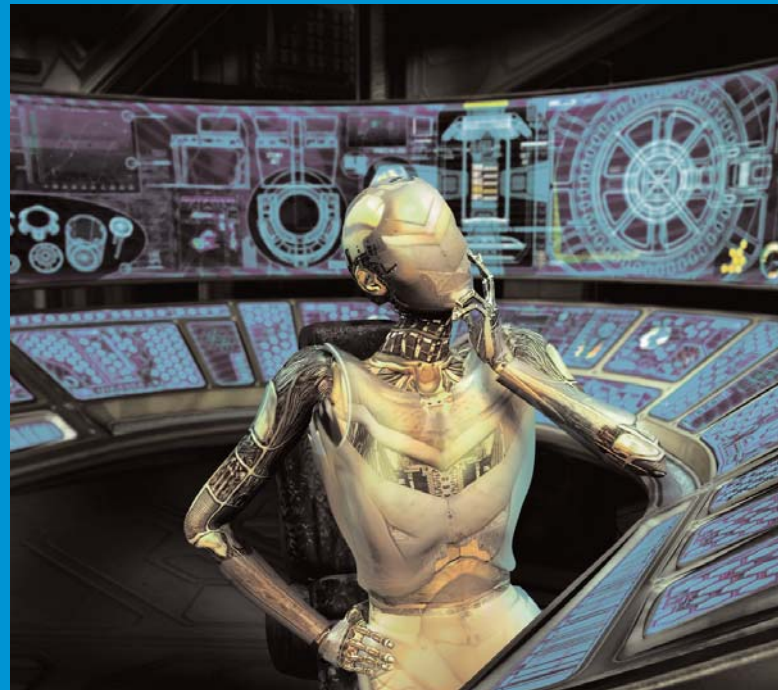
Germany

Lichtstraße 2
D-45127 Essen
Germany
Phone: +49 (0)201 - 747 98-0
Fax: +49 (0)201 - 747 98-50
E-mail: sales.germany@raritan.com
Web: Raritan.de

France

120, Rue Jean Jaurès
92300 Levallois-Perret
France
Phone: +33 (0)1 47.56.20.39
Fax: +33 (0)1 47.56.20.61
E-mail: sales.france@raritan.com
Web: Raritan.fr

What's the most powerful IT management tool of the future?



Information.

And now Raritan can help get it in the right hands. Yours.

Presenting Raritan intelligent management solutions.

You can't manage your IT infrastructure if you don't know what it's doing.

With increasingly complex infrastructures, limited space and steady if not shrinking budgets, it's more important than ever for IT managers like you to resolve problems quickly and correctly, ensuring that your systems continue to operate smoothly.

To do this right, to make intelligent decisions, you need accurate, consolidated information at your fingertips.

That's where Raritan can help.

Our intelligent management solutions get the information in your hands, when you need it.

Raritan offers a complete line of IT management tools that have the power to bring actionable information right to your desktop.

Our products, including rack PDUs, KVM solutions, serial console servers and management solutions, help companies of all sizes monitor and manage server access, server utilization and energy consumption to optimize data center efficiency and enhance branch office operations.

Information. It's the future of IT management. And Raritan can help you get it now.

-
- ▶ Power Management Solutions
 - ▶ Infrastructure Management
 - ▶ KVM Switches
 - ▶ Serial Console Switches
 - ▶ Accessories and Rack Management

Power Management Solutions

Raritan offers intelligent power and energy management solutions which allow data center operations managers, IT administrators and facilities managers to reduce costs and improve efficiency, uptime and capacity planning. Our solutions are standards based and fit seamlessly into your current infrastructure.

Raritan's energy management software gathers power and sensor data and manages Raritan's PDUs as well as those from APC, Server Technology, Geist and HP. Our rack power distribution units (PDUs) are mounted in an IT equipment rack and provide electrical power to various IT devices, such as servers, routers, firewalls, etc. Today, rack PDUs come in a number of configurations that help you manage power in the data center.

- ▶ Monitor power and energy down to the individual IT device with outlet metering
- ▶ Identify stranded excess power capacity
- ▶ Know which racks are hot or cold
- ▶ Generate reports for bill backs, kWh, CO₂ emissions and energy rebates
- ▶ Increase uptime through monitoring, alerting and load shedding

Energy Management Software



Power IQ™ energy management system enables you to become more effective in power capacity management and efficient in energy consumption.

It provides for accurate IT device, outlet group, rack, branch circuit and data center level energy monitoring and reporting. Power IQ simplifies management of and data collection for multiple rack PDUs.

Are you concerned about?

- ▶ Limited supply of power
- ▶ High cost of energy
- ▶ Environmental compliance

Power IQ manages any number of Raritan's Dominion® PX™ and third-party rack PDUs. The system is open database compliant (ODBC) and can be integrated with your current reporting system. Its data collection and reporting capabilities, used in combination with rack PDUs, help IT and facilities managers:

- ▶ Generate energy cost reports for customers
- ▶ Baseline and certify changes in energy and carbon footprint
- ▶ Find stranded power capacity
- ▶ Simplify centralized Dominion PX management with bulk configuration and firmware management
- ▶ Enable multivendor power data aggregation through user configurable collection intervals
- ▶ Create trending reports, so you can easily see usage trends
- ▶ Create "what if" reports to review historical results of planned changes

Intelligent Rack PDUs



Dominion PX is an intelligent remote power management solution that helps IT administrators improve uptime and staff productivity, save money and improve utilization of power resources.

Information provided by the PX is displayed at the strip via an LED display, and remotely through a Web browser. It can be used to improve capacity planning through power consumption information at the PDU level and individual receptacles.

Plus outlet-level access and control allows users to reboot attached devices. Optional sensors are available to monitor rack temperature and humidity.

- ▶ Emergencies can be resolved with remote serial and TCP/IP access to outlet-level switching, improving MTTR
- ▶ Capacity planning is simplified with unit-level and outlet-level power utilization information
- ▶ Staff can gather detailed power information to improve uptime and productivity
- ▶ Travel costs and time can be saved with remote power cycling and monitoring

PX is available in a variety of form factors, voltage and current ratings, including single-phase, three-phase, switched and non-switched models.

Whether used alone or integrated with other Raritan solutions, PX offers secure access with 256-bit AES encryption and strong passwords. It supports advanced authorization options, including individual IT device outlet permissions and LDAP/S, RADIUS and Active Directory®. Flexible management interfaces support HTTP, HTTPS, IPMI, SMASH-CLP, SSH, TELENET and SNMP, as well as user-configurable, outlet-level delays for power sequencing.

Plus, the PX can be integrated with the following Raritan solutions:

- ▶ PDU management software: Power IQ
- ▶ Secure console servers: Dominion SX
- ▶ Infrastructure management: dcTrack™ and CommandCenter® Secure Gateway
- ▶ KVM switches: Dominion KX II and Paragon II
- ▶ KVM/Serial remote office switches: Dominion KSX II

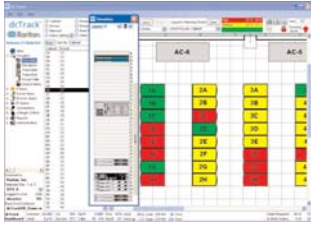
Inline metered PX models

The **PX-3000 series** support all the PX functionality except remote outlet-level switching. They are intended to be inserted in existing power feeds where metering and environmental monitoring are desired. They operate over a range of voltages and amperages. The actual voltages and amperages are determined by the data center wiring.

- ▶ 2 lines or 4 lines support more lines per unit simplifies deployment and saves IP addresses
- ▶ 16 or 32 amp options
- ▶ 100-240V
- ▶ 1U rack mountable form factor
- ▶ Terminal Block or C19/C20 input/output options
- ▶ Meters Voltage (V), Current (Amps), Apparent Power (kVA), Active Power (kW), Energy consumption (kWh) with 3 digit LED Visual Display
- ▶ Billing grade metering accuracy +/- 1%
- ▶ Works with Power IQ, comprehensive energy and element management software
 - kWh, CO₂, flexible data model
 - Analytics and reporting
 - Supports third-party devices, all APC switched and metered PDUs and inline meters, Geist, STI
- ▶ Integrated support for environmental sensors, no need to purchase another box
- ▶ More secure – 256-bit encryption, SNMP V3 encryption



Infrastructure Management



dcTrack is a data center infrastructure management (DCIM) solution providing powerful and intelligent tools for data center automation. dcTrack provides broad and deep visibility into the data center. It empowers data center managers to plan for growth and change by optimizing their current operations, assets and infrastructure.

- ▶ Visualize AutoCAD floor plan drawings in real time without the need for an AutoCAD license or software. Changes made to AutoCAD floor plans are immediately visible in dcTrack
- ▶ Visualize color-coded floor plans that summarize low, medium and high utilizations of key data center attributes such as heat dissipation, power usage, weight and rack mounting space
- ▶ Manage multiple data center sites regardless of their geographic locations
- ▶ Store all sites in one ODBC-compliant, scalable SQL server database
- ▶ Track financial asset information including purchase date, purchase price, department cost center, asset tag and maintenance contracts
- ▶ Track physical asset information including rack units, dimensions, weight, manufacturer, model and serial number
- ▶ Track logical asset information including function, operating system, administrators and user departments
- ▶ Manage logical relationships and connections between servers and network switches based on IP subnet addresses
- ▶ Auto-discover dynamic server attributes such as processors, memory, disk utilization, processes and applications as well as IP and MAC addresses
- ▶ Use results of the auto-discovery scan to audit existing dcTrack items or use them to populate new items
- ▶ Manage all server types including physical, virtual, and blade servers
- ▶ Monitor and track power loads and environmental data in real time throughout the data center including intelligent rack PDUs (power strips), temperature/humidity probes, PDUs, UPS systems and CRAC units
- ▶ Determine the power loads at any point in the circuit path. The power readings are available for rack PDUs, power outlets, breakers, breaker panels, PDUs and UPS systems using derated values and actual readings where available
- ▶ Track electrical busway distribution systems including busway modules, circuit breakers and receptacle types with granular and graphic detail
- ▶ Receive alerts when power is being exceeded at any point upstream in the circuit path
- ▶ Document and visualize cable routes within the data center on the floor plan
- ▶ Provision data and power circuits using built-in automation and intelligence tools. End-to-end data circuits can be automatically provisioned based on user-defined rules such as color code, VLAN or simply the next available port
- ▶ Maintain best practices and improve operational efficiencies by using a well-defined change management process
- ▶ Automate device moves using built-in intelligence tools to determine suitable cabinet destination based on available resources. Resources include available rack units, power sources, data cabling, color codes, network VLAN and IP addresses
- ▶ Extensive library of the most popular data center items including blade servers, physical servers, network switches, SAN switches, rack PDUs and many other items
- ▶ Utility to import user data in bulk from spreadsheets. The utility can be customized to allow for the import of non-structured spreadsheets by mapping spreadsheet column headings to specific dcTrack fields

Infrastructure Management



CommandCenter Secure Gateway (CC-SG) provides IT organizations with integrated, secure and simplified access and control of all technology platforms at the application, operating system and BIOS-level. By managing all the devices in your centralized, distributed data centers and remote locations, it lowers the cost of purchasing, implementing and maintaining additional access points and eliminates truck rolls. What's more, by offering a consolidated view from a single point of access, it helps streamline operations, and improves staff efficiency by saving time when responding to trouble tickets.

Designed for large enterprises with multiple datacenters as well as medium and smaller size IT server rooms and lights-out network operation centers, this feature-rich appliance includes:

- ▶ Single point of access to all physical servers (including blade systems and servers), virtual machines and VMware™ infrastructure such as ESX server and VirtualCenter environments in the data center. Secure, single point of access for managing Raritan Dominion KX II/SX/KSX II, Paragon II, and Dominion PX intelligent power distribution units, as well as other embedded solutions like HP iLO2, iLO, RILOE, RILOE II, IBM RSA II, Dell DRAC4, IPMI and in-band access via RDP, VNC, SSH and TELNET as well as generic Web browser interfaces
- ▶ Array of flexible logging and reporting options with audit trails for diagnostics and troubleshooting
- ▶ Comprehensive reporting capabilities IP-based Access Control Lists (ACL), which grant or restrict user access by IP address
- ▶ The ability to monitor, diagnose and resolve infrastructure problems
- ▶ SNMP TRAPS/event support to forward critical alerts to SNMP Manager (e.g., HP OpenView)

- ▶ Centralized, role-based user access policy management
- ▶ HTML Access Client interface, which allows the user to easily locate managed equipment in customizable views, including favorites and recently accessed nodes
- ▶ Node view, which allows users to easily identify and access any target system through a variety of interfaces, including in-band and out-of-band KVM, serial, embedded or in-band software applications, as well as power control
- ▶ Support for a broad range of authentication protocols, including LDAP, Active Directory, RADIUS, SecureID, TACACS+, CommandCenter Management Products and RSA. Support for AES and RC4 encryption
- ▶ Proxy mode for secure access to devices through firewalls/VPNs
- ▶ Strong user password authentication, SAS 70 compliance for configurable amount of failed login attempts and user ID lock out parameters
- ▶ Low security profile, Linux-based appliance with one point of contact for all software or firmware support
- ▶ Geographic redundancy, with primary and secondary CommandCenter Secure Gateways deployable on different subnets and/or locations
- ▶ "Neighborhood" deployment allows for a collection of up to 10 devices, working together to serve the access and control needs of the enterprise. It improves performance by distributing device and node access across CC-SG units within a data center, regionally or organizationally

KVM Switches

Raritan's powerful KVM solutions let you view and manage multiple servers and network devices from one or more centralized user consoles, each consisting of a single keyboard, video monitor and mouse. They provide consolidated information about each server while reducing equipment clutter. Plus, our remote solutions permit lights-out data center operation whether your users are across the hall or halfway around the world.

KVM-over-IP Switches for Enterprise



Multiport KVM-over-IP

Dominion® KX II is Raritan's enterprise-class, secure KVM-over-IP switch that provides BIOS-level access and control of up to 64 multiplatform servers, via almost any combination of OS and browser. Dominion KX II offers standard features such as Virtual Media and dual power – available on all models – that maximize performance, security, reliability and versatility.

- ▶ Industry's first 64-port KVM-over-IP switch
- ▶ Built-in Universal Virtual Media on all models
- ▶ Absolute Mouse Synchronization™
- ▶ 256-bit AES and 128-bit SSL or RC4 encryption, support for LDAP, Active Directory, RADIUS
- ▶ Dual power and dual gigabit Ethernet with automatic failover on all models
- ▶ A common browser-based GUI for local and remote access
- ▶ Integrated remote power control
- ▶ Supports Dell®, HP and IBM® blade servers
- ▶ Plug-and-play installation and configuration
- ▶ Smart card/CAC authentication – local and remote (over IP)



Winner of
InfoWorld's 2008
Technology of
the Year Award
for Best KVM



Single-Port KVM over IP

Dominion® KX II-101 is a single-port KVM-over-IP switch in a palm-size form factor.

Whether it's used in a branch office, a data center or a lab, the Dominion KX II-101 provides unblocked out-of-band access in a Zero-U unit.

- ▶ For environments like remote offices, where there are a small number of servers
- ▶ For environments requiring many-to-many connectivity between large numbers of users and target devices
- ▶ Local port available
- ▶ 256-bit AES encryption, support for RADIUS, LDAP and Active Directory®
- ▶ Built-in Universal Virtual Media



KVM and Serial over IP

Dominion® KSX II integrates KVM over IP and serial control in a single appliance. Ideal for mid-size server rooms and remote offices, the Dominion KSX II is an out-of-band access solution for collocated servers and networking devices.

- ▶ Remote KVM and serial console access in a single appliance
- ▶ BIOS-level access to devices if the OS fails
- ▶ Dial-up access if the network fails
- ▶ Virtual Media file transfer capabilities for patches and upgrades

Analog KVM Switches for Enterprise



FIPS 201
approved

Paragon II is our second generation, battle-tested, secure Cat5 analog KVM solution with the industry's best video performance. Paragon II offers higher video resolution over greater distances, non-blocked access for up to 64 users and thousands of multiplatform servers, optional IP access and centralized management – plus secure, Smart Card technology.

- ▶ Industry's best video quality with resolutions as high as 1920 x 1440 at distances of up to 300 meters
- ▶ First Smart Card reader for KVM access to data centers for added security; supports Federal HSPD-12 standards
- ▶ Cost-effective, space-saving stacking unit expands up to 128 non-blocked server ports with less cable than cascading
- ▶ Multiple video enables up to four user stations to simultaneously receive the video output of a server that has multiple video ports
- ▶ Video redirect provides easy redirection of video to any user station within a Paragon II system
- ▶ Manual and automatic video tuning and skew compensation allows administrators to save time on server setup and fine tune the video signal
- ▶ Kensington Expert Mouse® support for Mac® environments
- ▶ Integrated power management for convenience
- ▶ Optional KVM-over-IP capabilities for remote access

KVM Extender

Cat5 Reach® gives access to users up to 300 meters away from a KVM switch – far enough for most data center buildings. It lets you locate servers in a clean, secure environment, to protect hardware, applications and data from human traffic.

Small Business and SOHO KVM Switches



MasterConsole® CAT, the most economic KVM solution to manage midsize data centers, allows one or two users to control up to 256 servers by cascading two levels.

- ▶ Uses Cat5/6 cables, saving you space and allowing easier cabling
- ▶ Unique “keep-alive” design which ensures nonstop server operation in case of power loss to the switch
- ▶ Support of high-resolution video – up to 1600 x 1200
- ▶ Works with every leading server (Microsoft® Windows® NT, Windows Me, Windows 2000, Windows XP, Windows 2003, Windows Vista, Novell® NetWare, UNIX® and Linux®)
- ▶ Optional user station with Cat5/6 connection

MasterConsole®, a powerful analog KVM switch, gives you control of servers in midsize data centers. The product line includes four simple, yet full-featured models.

- ▶ Advanced on-screen user interface and security features
- ▶ Multiplatform control, up to four simultaneous users and 16 servers expandable to 256 with cascaded units
- ▶ Access from anywhere over IP with Raritan's IP-Reach, or via MasterConsole IP model



MasterConsole® IP is a full-featured, easy-to-use KVM switch for small to midsize businesses. It brings convenience, flexibility and security to a SMB scale with:

- ▶ BIOS-level control of up to 8 or 16 servers from one keyboard, monitor and mouse
- ▶ High-performance KVM-over-IP technology
- ▶ 256-bit SSL encryption, certificate management, configurable TCP/IP port numbers and user access rights



MasterConsole® Z is a space-saving, flexible KVM solution that allows one user to access and manage up to 64 (PS/2, USB, Sun) servers through a daisy-chain of Computer Interface Modules, one connected to each target server.

- ▶ Simple plug-and-play operation
- ▶ User-defined port names
- ▶ Password authorization
- ▶ On-site flash firmware upgrades
- ▶ Keep-alive keyboard/mouse emulation
- ▶ Support of high-resolution video – up to 1600 x 1200
- ▶ Automatic Video Tuning (AVT) to adjust video quality automatically
- ▶ Control servers up to 213 meters away

SwitchMan® is an affordable single user KVM switch for controlling two to four PCs. It's the only KVM switch that combines professional-grade technology with an easy-to-use desktop design. It can be deployed vertically to save space.



SwitchMan® USB allows control of up to four USB computers. Its built-in USB 2.0 Hub allows multiple computers to share USB-supported devices.



SwitchMan® USB Combo enables control of up to four USB or PS/2 computers from a single USB keyboard, monitor and USB mouse. Has a built-in USB 2.0 Hub, as above.

Serial Console Switches



Dominion SX is a secure, serial console server enabling serial-over-IP access via SSH or Web browser. Whether it's used in data centers or remote offices, the Dominion SX provides a single, secure, out-of-band view of multiple serially-managed servers, network devices and power strips from anywhere. Features include:

- ▶ AES and 128-bit SSL encryption
- ▶ Models with 4 to 48 ports and built-in modem available
- ▶ Flexible authentication support – RADIUS, LDAP(S), Kerberos v.5, Active Directory and TACACS+
- ▶ Available models with dual power supplies, built-in modem and redundant LAN interface

Accessories and Rack Management



Managing an IT infrastructure is a 24/7 challenge. So it's more important than ever to find and deploy devices and accessories that work together the first time, every time. For these reasons and more, you can count on Raritan for a complete range of device accessories and rack management, including high-performance User Stations, LCD KVM Consoles, Computer Interface Modules (CIMs), temperature and humidity sensors and more.

LCD KVM Console



Raritan's 17" and 19" LCD KVM Consoles combine video, keyboard and touchpad functionality in 1U design for easy, at-the-rack server access. They seamlessly connect to our Paragon II analog KVM switches, Dominion KX II KVM-over-IP switches or KVM switches from other vendors, providing a single workstation to manage the entire rack of servers.

Plus their space-saving designs are ideal for data centers, server rooms and other space-critical environments.

LCD KVM Switch



17" LCD KVM switches combine an LCD console drawer with a CAT5 KVM switch into one, easy-to-install 1U device giving you an all-in-one solution for your rack management needs. Each unit lets you access 8, 16 - up to 256 servers - directly at the rack, or from your desk up to 195 meters away.

Integrating seamlessly with other Raritan solutions, 17" LCD KVM switches offers powerful anytime, anywhere access to servers and other network devices at the rack, in the office or from around the world.

Extended Warranties

Raritan's products are covered by the most extensive standard warranty in the industry. Also available are affordable premium support and service options that include advanced replacement and technical support.

Ready to manage smarter?

Call **+31 (0)10 284 4040** or visit **Raritan.eu** for:

- ▶ A live online demonstration of our products
- ▶ A needs evaluation
- ▶ Answers to your questions
- ▶ The name of a Raritan Solution Provider near you