

PACSmate Medical Solutions

Celebrate Humanity with Technology

PACSmate Technology Inc. is a professional medical solution provider, focusing on high-resolution medical displays and medical panel PC. Being the member of ICP Group, PACSmate benefits from the group manufacturing expertise as well as strategic and operational resources, allowing quick development of diverse medical-grade products. All PACSmate® medical products are ISO-9001, ISO-14000 and ISO-13485 compliant and are easily applied to a wide range of medical applications.



Our Advantages

- **Continuous Technology Innovation**

The patented GrayBoost® simultaneous 12-bit grayscale and GrayEasy® 30-bit deep color are PACSmate market-leading display technology. The experienced R&D teams aim to keep product innovation for better competitiveness in the market.

- **Highest Product Reliability**

All PACSmate medical products are compliant with stringent safety standards for the highest product reliability, including UL 60601-1, CE (EN 60601-2), FCC Class B, TUV GM, VCCI, BSMI and CCC.

- **Diverse Product Selection**

PACSmate's high-performing and cost-effective products include diagnostic monochrome/color monitors, clinical reviewing color monitors and all-in-one medical panel PCs, widely used as medical recording/ imaging terminals.

- **Trusted Quality Manufacturing**

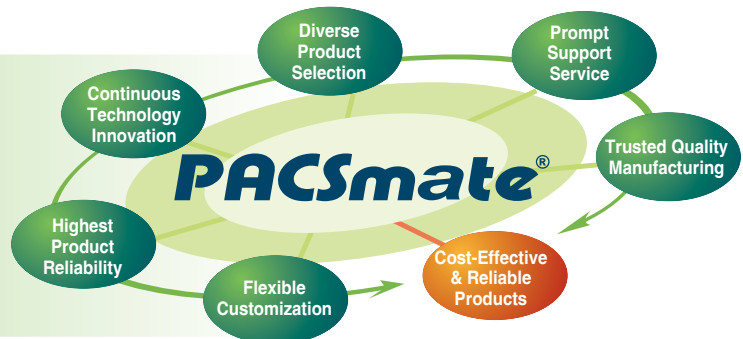
All PACSmate monitors are manufactured with extreme care from panel selection to final calibration. Every aspect of each panel is carefully inspected, including luminance, viewing angle and chromaticity.

- **Prompt Support Service**

PACSmate provides localized after-sale service, ensuring the quickest technical support toward customers' requirement.

- **Flexible Customization**

PACSmate provides localized after-sale service, ensuring the quickest technical support toward customers' requirement.



1

IEI Mobile Solutions

2

Automation Panel Solutions

3

Video Wall Controller/ Splitter

4

RISC-based Solutions

5

PACSmate Medical Solutions

6

Optional Peripherals

Diagnostic Medical Display

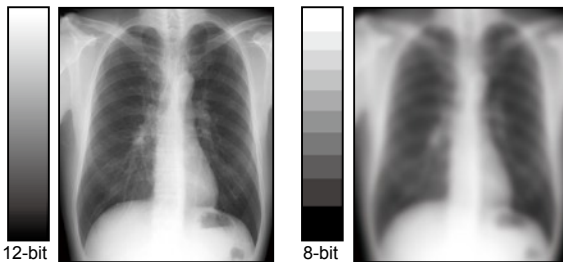
PACS Diagnostic Application



High-Resolution Monochrome Monitor	MMD-5201M 12-bit 5MP	MMD-3213M 12-bit 3MP	MMD-2213M 12-bit 2MP
LCD Size	20.1"	21.3"	21.3"
Resolution	2560 x 2048	2048 x 1536	1600 x 1200
Max. Luminance	Typical : 850cd/m ² Calibrated: 600cd/m ²	Typical : 800cd/m ² Calibrated: 600cd/m ²	Typical : 1000cd/m ² Calibrated: 600cd/m ²
High-Resolution Color Monitor	MMD-4300C 30-bit 4MP	MMD-3213CH 30-bit 3MP	MMD-2213CH 30-bit 2MP
LCD Size	30"	21.3"	21.3"
Resolution	2560 x 1600	2048 x 1536	1600 x 1200
Max. Luminance	Typical : 370cd/m ² Calibrated: 250cd/m ²	Typical : 800cd/m ² Calibrated: 550cd/m ²	Typical : 950cd/m ² Calibrated: 550cd/m ²

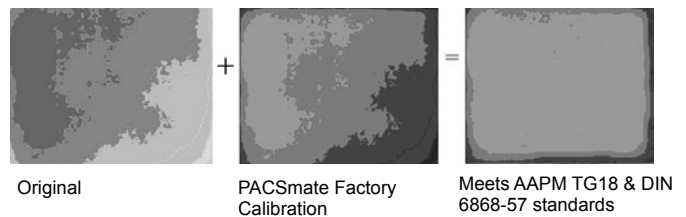
● GrayBoost® 12-bit Simultaneous Grayscale

12-bit (4096 tones) image input can be all retained in 12-bit (4096 tones) image output via built-in 12-bit LUT. The PACSmate GrayBoost® technology successfully produces 12-bit image data flow through commercial dual-link graphic card, lowering total cost of ownership.



● Uniform Luminance

Uniform luminance is especially critical for diagnostic applications and PACSmate therefore sets a high standard for the uniformity of every medical monitor. PACSmate's special testing equipment ensures every customer gets medical monitors with best uniformity for precise diagnostic results.



● GrayBoost® 30-bit Deep Color

30-bit color image (10-bit for each RGB element) can be displayed on PACSmate® color monitors for HDMITM 1.3 deep color display capabilities.

● Backlight Stabilizer

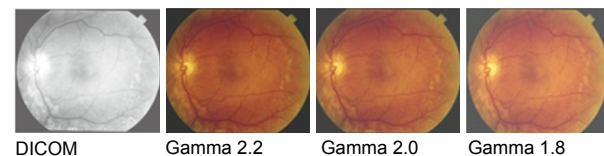
The GeniGUARD® built-in backlight stabilizer integrated in PACSmate® monitors automatically calibrates the shift of LCD brightness caused by startup drift, ambient temperature and backlight aging.



GeniGUARD® Backlight Stabilizer

● User Selectable Gamma Settings

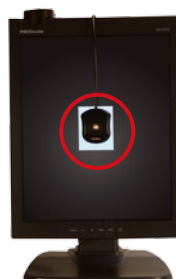
PACSmate's color medical display can be adjusted with Gamma 1.8,2.0,2.2, DICOM and user settings for different brightness conditions to achieve the optimal display quality for images from different modalities.



● GeniSPOT® & GeniPASS® QC Solution

The GeniSPOT® 3-in-1 calibration system and GeniPASS® QC Utility ensure the display conforms with AAPM, DIN, JIS and IEC standards all the time.

GeniSPOT® DICOM Calibration



1

IEI Mobile Solutions

2

Automation Panel Solutions

3

Video Wall Controller/ Splitter

4

RISC-based Solutions

5

PACSmate Medical Solutions

6

Optional Peripherals

Clinical Reviewing Medical Display



Coming Soon

Model Name	MMC-2201M	MMC-2201C	MMC-2240C	MMC-1190C	MMC-1170C	POCM-1170C
Monitor Type	Monochrome	Color	Color	Color	Color	Color
LCD Size	20.1"	20.1"	24"	19"	17"	17"
Resolution	1600 x 1200	1600 x 1200	1920 x 1200	1280 x 1024	1280 x 1024	1280 x 1024
Max. Luminance (typical)	700cd/m ²	300cd/m ²	400cd/m ²	300cd/m ²	300cd/m ²	300cd/m ²
Input Interface	VGA / DVI / Component / Composite	VGA / DVI / Component	VGA / DVI / S-Video / Component / Composite / HD-SDI	VGA / DVI / S-Video / Component / Composite	VGA / DVI / S-Video / Component / Composite	VGA / DVI / S-Video / Component / Composite

Multiple Color Temperature Settings

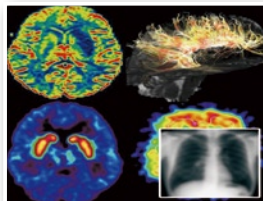
A wide range of color temperatures are included in the MMC-1170C and MMC-1190C, including 3600K/4600K/5600K/6500K/7500K. The easy color temperature adjustment ensure the best display quality when viewing images from different modalities.

Picture-in-Picture Function

PIP function enables a second images viewed in a small on-screen window. The Picture-outside-picture can be implemented for image comparison.

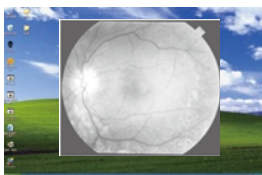
Flexible PIP settings:

- Upper left/right and lower left/right of window's position
- Small, medium and large on-screen windows setting
- Independent brightness and contrast control for PIP windows

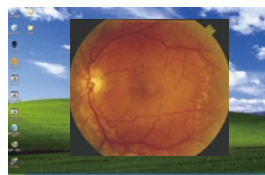


User Selectable Gamma Settings

PACSmate's color medical display can be adjusted with Gamma 2.2 and DICOM preset under 6500K color temperature for different brightness conditions to achieve the optimal display quality for images from different modalities.



DICOM



Gamma 2.2

Multiple Video Input Interfaces

The multiple input interfaces on selected MMC series monitors enable connection to various medical devices. The multiple inputs include:

- Single-Link DVI-D (digital)
- Component YPbPr BNC connector
- DB-15 VGA
- VGA to BNC
- Composite BNC (NTSC/PAL)

Smart OSD Utility

The smartOSD is an intelligent On-Screen Display control. The user-friendly OSD interface under Windows environment enables users to adjust the monitor easily from a remote system.

The smartOSD allows some functions as below:

- Power on/off
- Luminance selection
- Color temperature selection
- Gamma selection
- Monitor information



Ergonomic Design

Narrow bezels enable easy side-by-side viewing for diagnostic applications.



1

IEI Mobile Solutions

2

Automation Panel Solutions

3

Video Wall Controller Splitter

4

RISC-based Solutions

5

PACSmate Medical Solutions

6

Optional Peripherals

Medical Panel PC

Coming Soon



Model Name	POC-517A	POC-519B	POC-417B / 419B	POC-415A-N270	POC-415A / 417A / 419A	POC-3174B
Feature	Fanless High Performance	Fanless High Performance	High Performance	Fanless	Fanless	"Back-Up Battery(14.8V, 3800mAh) Expansion slot"
LCD	17"	19"	17" / 19"	15"	15" / 17" / 19"	17"
CPU	Intel® Core™ 2 Duo T9400-2.53G / T7500-2.2G / P8400-2.26G	Intel® Core™ i series i7-620M 2.66G / i5-520M 2.4G	Intel® Core™ 2 Duo T7500-2.2G / CM 550-2.0G	Intel® Atom™ N270 1.6G	Intel® Celeron M 373 1.0G with 512K L2 cache	Intel® Core™ 2 Duo T7500-2.2G / CM 550-2.0G
Chipset	Intel® GM45 + ICH9M	Intel® HM55	Intel® GME965 + ICH8M	Intel® 945GSE + ICH7M	Intel® 910GMLE + ICH6M	Intel® GME965 + ICH8M
RAM	2 x DDR2 SO-DIMM slot	2 x DDR3 SO-DIMM slot	2 x DDR2 SO-DIMM slot	1 x DDR2 SO-DIMM slot	2 x DDR2 SO-DIMM slot	2 x DDR2 SO-DIMM slot
WLAN	802.11 b/g/n	802.11 b/g/n	802.11 b/g/n	802.11 b/g/n	802.11 b/g	802.11 b/g/n
Bluetooth	Yes	Yes	Yes	Yes	Yes	No
2nd Display	VGA/HDMI/Display port	VGA/HDMI	VGA	VGA	VGA	VGA/DVI
Optical Drive	DVD combo	DVD combo	N/A	N/A	N/A	DVD combo
Expansion	N/A	N/A	N/A	N/A	N/A	1 x PCI 1 x Express Card 54
Power	AC 110~240V to DC 12V power adapter	AC 110~240V to DC 12V power adapter	AC 110~240V to DC 12V power adapter	AC 110~240V to DC 12V power adapter	AC 110~240V to DC 12V power adapter	AC 110~240V to DC 12V power adapter
Thickness(mm)	78	80	75 / 78	61	61 / 65 / 67	122

1

IEI Mobile Solutions

● Value-Added UPS Advantage

The built-in battery in the POC-3/B series ensures UPS function for medical application, allowing standby power for data backup and management under sudden power shut-down situation. PACSmate unique AUPS software provides the information of current battery status, charging status and percentage remaining, facilitating battery monitoring requirement.

● Advanced Technology Innovation

The special thermal design makes PACSmate POC-4/A ultra-slim and fanless, perfect for bedside applications. The unique Intel® Core™ 2 Duo® platform brings the advanced processing power for POC-4/B series.

● Quick Installation Advantage

The PACSmate point-of-care series are full system panel PC with preinstalled CPU, DRAM, and HDD. The all-in-one architecture not only eases installation but also saves space.

● Best Product Reliability

The elegant ivory outlook design is perfect for the medical environment. The IP 65 dustproof and waterproof front bezel allows easy cleaning just using disinfectant, and the screen won't be damaged.

● Perfect Network Connection

The two Gigabit Ethernet LAN connectors and wireless 802.11a/b/g/n network connections increase redundancy and ensure reliable networks for real-time medical record processing

● Powerful Connection Advantage

The numerous I/O interface design enables perfect connection with various medical devices. The built-in bluetooth module provides a wireless connection to a wide variety of medical peripherals.

● User-Friendly Interface

The PACSmate point-of-care panel PC series are designed with a sensitive and reliable touch screen which makes data entry much easier. The user-friendly touch screen makes the POC series a perfect information terminal.

2

Automation Panel Solutions

3

Video Wall Controller/ Splitter

4

RISC-based Solutions

5

PACSmate Medical Solutions

6

Optional Peripherals

